

GRAND THEATRE

RACHEL PEAKE, ARTISTIC DIRECTOR

AUDIENCE ENRICHMENT GUIDE

AS YOU LIKE IT

BY WILLIAM SHAKESPEARE

ADAPTED & DIRECTED BY
DARYL CLORAN

THE CAST OF AS YOU LIKE IT: DIRECTOR: DARYL CLORAN,
CHOREOGRAPHY BY JONATHAN HAWLEY PERLES,
SET DESIGN BY FRANK JOHNSON,
COSTUME DESIGN BY CAIMEN ALATORRE,
LIGHTING DESIGN BY BERARDI KING,
PHOTOS BY TILLY LEE FOR THEATRE CALLABRY.

CONCEIVED BY
DARYL CLORAN &
BARD ON THE BEACH
SHAKESPEARE FESTIVAL

SEASON SPONSOR



DOWNTOWN
COMMUNITY
PARTNER



TITLE SPONSOR



GRANDTHEATRE

SPRIET STAGE, OCTOBER 15 TO NOVEMBER 2, 2024

OPENING NIGHT OCTOBER 18, 2024

AS YOU LIKE IT

BY **WILLIAM SHAKESPEARE**

ADAPTED & DIRECTED BY
DARYL CLORAN

CONCEIVED BY
**DARYL CLORAN &
BARD ON THE BEACH
SHAKESPEARE FESTIVAL**

CREATIVE TEAM

ADAPTOR/DIRECTOR	DARYL CLORAN
MUSIC DIRECTOR/SUPERVISOR	BEN ELLIOTT
CHOREOGRAPHER/FIGHT DIRECTOR	JONATHAN HAWLEY PURVIS
SET DESIGNER	PAM JOHNSON
COSTUME DESIGNER	CARMEN ALATORRE*
LIGHTING DESIGNER	HINA NISHIOKA* ‡
ORIGINAL SOUND DESIGNER	PETER McBOYLE
SOUND DESIGNER	OWEN HUTCHINSON*
CREATIVE CONSULTANT	RICK BOYNTON
STAGE MANAGER	CHRISTINE LEROUX
ASSISTANT STAGE MANAGER	SUZANNE McARTHUR
APPRENTICE STAGE MANAGER	EMMA JO CONLIN

‡ Based on original Lighting Design by Gerald King.

Original Lighting Design by Gerald King • Pre-show content and comedic contributions by Kayvon Khoshkam • Clearance & Music Consulting by John Ciccone, Copyright Music and Visuals • Production Originally Created by Bard on the Beach Shakespeare Festival (Vancouver) • Additional Production Materials Created by Royal Manitoba Theatre Centre (Winnipeg), Citadel Theatre (Edmonton) and Chicago Shakespeare Theater.

Photography and video/audio recording of this production is strictly prohibited.

CAST

WILLIAM/JACQUES DE BOYS/ ASSASSIN/FOREST LORD/MUSICIAN	HENRY BEASLEY
AMIENS/HYMEN/ASSASSIN/MUSICIAN	TYLER CHECK
DAME FRANCES/DAME SENIOR	NADIEN CHU
CORIN/DAME FRANCES' ATTENDANT	JENNIFER COPPING
ROSALIND	DANIELA FERNANDEZ
ORLANDO DE BOYS	JEFF IRVING
PHOEBE/ELEANOR RIGBY	ALEXANDRA LAINFIESTA
SILVIUS/FOREST LORD/MUSICIAN	ANTON LIPOVETKY
OLIVER DE BOYS	MATTHEW MACDONALD-BAIN
AUDREY/LADY DANGER	JENNY McKILLOP
FOREST LORD/MUSICIAN	JUNE MIROCHNICK
CELIA	NAOMI NGEBULANA
ADAM/MARTEXT/MUSTACHIO	TROY O'DONNELL
JAQUES/LE BEAU	JAN ALEXANDRA SMITH
FOREST LORD/MUSICIAN	ISAIAH TERRELL-DOBBS
TOUCHSTONE	LEON WILLEY
CHARLES THE WRESTLER/FOREST LORD	JACOB WOIKE

FOR BARD ON THE BEACH SHAKESPEARE FESTIVAL:

Artistic Director: Christopher Gaze • Executive Director: Claire Sakaki • Associate Artistic Director: Dean Paul Gibson • Director of Finance and Administration: Fernando Jacob • Director of Marketing and Communications: Emma Lancaster • Director of Development: Diane Cook • Director of Operations: Ava Forsyth • Director of Education: Mary Hartman • Production Director: Jonathan Ryder • Production Manager: Jessica Chambers • Technical Director: Richard Hansen • Artistic and Company Manager: Susan Miyagishima • Head of Wardrobe: Amy McDougall • Interim Head of Wardrobe: Melissa McCowell • Head of Wigs, Hair and Makeup: Caitlin Peake • Head of Properties: Heidi Wilkinson/Flying Fox Productions • Head of Lighting: Conrad Tugnum • Head of Audio: Chris Engleman • Technical Advisor: Brent Letain

This adaptation of *AS YOU LIKE IT* originated at Bard on the Beach Shakespeare Festival on the BMO Mainstage, in Vancouver, Canada. Chicago Shakespeare Theater further developed and produced the U.S. premiere in the Jentes Family Courtyard Theater in 2021.

† *The participation of this Artist is arranged by permission of Canadian Actors' Equity Association under the provisions of the Dance • Opera • Theatre Policy.*

**Indicated designers are represented by the Associated Designers of Canada, IATSE Local ADC659.*



Table of Contents

<u>Introduction</u>	3
Content Advisory	3
Creation of <i>As You Like It</i>	3
Curriculum Connections	3
Themes	3
<u>William Shakespeare and The Beatles</u>	4
<u>English Rock Music: Before and After The Beatles</u>	6
<u>Literature and Drama: Before and After Shakespeare</u>	6
<u>Glossary</u>	7
<u>Synopsis</u>	8 & 9
<u>The Characters</u>	10
<u>Song List</u>	11
<u>Pre- and Post-Show</u>	12
- Discussion Questions	12
- Classroom Activities	12
<u>“Which Shakespeare Play Should I Watch?” Activity Flowchart</u>	13
<u>Post-Show Classroom Activity #2 Sheet</u>	14

AS YOU LIKE IT

AUDIENCE ENRICHMENT GUIDE

CONTENT ADVISORY

The production includes language that could be interpreted as sexist, stage blood, WWE-style wrestling, actions and language alluding to sexual acts, and partial nudity (*a speedo-style costume*). This show includes the use of haze, bright and flashing lights, and simulated smoking.

Creation of *As You Like It*

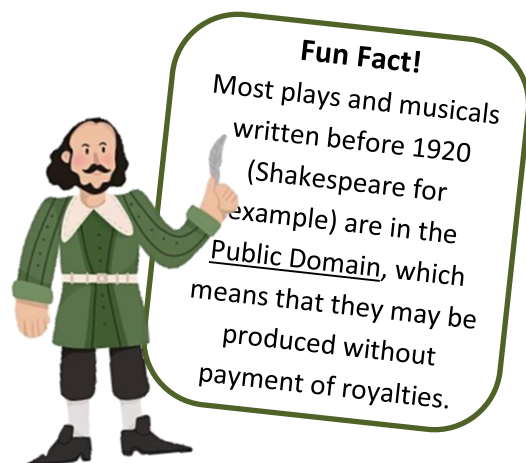
As You Like It is a popular stage production adapted by Daryl Cloran based on Shakespeare's pastoral comedy and featuring songs by English rock band, The Beatles. Cloran shared, "When I think of that time period [1960s], I feel an immense connection between The Beatles' early music and the storyline of the play. The 25 Beatles songs we've chosen lend themselves perfectly to this romantic and spiritual story." The thematic song, "All You Need Is Love", kept popping up in Cloran's head which made him realize that the play had a musical quality, and he believes that *As You Like It* is Shakespeare's most musical play. Cloran also felt that "The transition of The Beatles through the '60s is reminiscent of the free-spirited journey of the play's main characters... and I realized we could incorporate the laid-back environment of the Okanagan in the '60s to represent Shakespeare's Forest of Arden."

Curriculum Connections

- ♥ English (Writing, Literature)
- ♥ The Arts (Music; Visual Arts; Drama)
- ♥ Social Sciences (Psychology, Philosophy, History, Geography)
- ♥ Health and Physical Education/Sports

Themes

- ♥ Virtues
- ♥ Emotions
- ♥ Loyalty
- ♥ Family
- ♥ Love



William Shakespeare and the Origin of *As You Like It*

William Shakespeare was a renowned English poet, playwright, and actor born in 1564 in Stratford-upon-Avon. His birthday is most celebrated on April 23, which is also believed to be the date of his death in 1616. Shakespeare was a prolific writer during the Elizabethan and Jacobean ages of British theatre, sometimes called the English Renaissance or the Early Modern Period. His plays are perhaps his most enduring legacy, but his poems remain popular. Among his most famous works are plays like *Hamlet*, *Macbeth*, *Romeo & Juliet*, *Othello*, and *King Lear*, as well as sonnets such as Sonnet 18 ("Shall I compare thee to a summer's day?").



Forest of Arden / Okanagan

As You Like It is a pastoral comedy believed to have been written in 1599 and first published in the First Folio in 1623. The details of the first performance are uncertain but it is thought to have taken place at Wilton House, an English country house at Wilton near Salisbury in Wiltshire, in 1603. The story follows its heroine, Rosalind, who flees persecution in her uncle's court, accompanied by her cousin, Celia, and the court jester, Touchstone, to find safety and eventually love in the Forest of Arden.

The play is notable for its strong female protagonist, Rosalind, who exhibits intelligence, wit, and independence. Shakespeare often portrayed strong female characters in his plays, such as Portia in *The Merchant of Venice*, Viola in *Twelfth Night*, and Lady Macbeth in *Macbeth*. However, these strong female characters weren't actually played by female actors, as the beliefs at the time deemed acting unsuitable for women, and the theatre was considered an inappropriate environment for them. This prohibition from performing was primarily rooted in societal norms and legal restrictions.



The Beatles and Their Influence on English Rock Music

The Beatles, formed in Liverpool in 1960, consisted of John Lennon, Paul McCartney, George Harrison, and Ringo Starr. The band began with John Lennon forming The Quarrymen in 1957, which McCartney soon joined. Harrison became a member in 1958, and Ringo Starr completed the classic lineup in 1962. The name "The Beatles" was adopted in 1960, inspired by Buddy Holly's band, The Crickets, and a play on the word "beat." They were known to play live instruments, with Lennon and McCartney being the lead vocalists, Harrison on the guitar, and Starr on the drums. Regarded as the most influential band of all time, The Beatles achieved unprecedented levels of critical and

commercial success by early 1964, becoming international stars. They are the best-selling music artists in history, with estimated sales of 600 million units worldwide.

The Beatles: A Timeline

♥ 1956-1963: Formation

The Quarrymen, Lennon's skiffle* group, evolved into The Beatles with the additions of McCartney, Harrison, and Starr.

♥ 1963-1966: Beatlemania and Touring Years

The Beatles release their debut album, "Please Please Me" (1963), followed by "With The Beatles" (1963), "A Hard Day's Night" (1964), "Beatles For Sale" (1964), and "Help!" (1965). Beatlemania swept the globe as the band toured extensively.

*Skiffle is a genre of folk music with influences from American folk music, blues, country, bluegrass, and jazz, generally performed with a mixture of instruments.

♥ 1966-1970: Studio Years

The Beatles transitioned from live performances to focus on studio recordings, producing innovative albums like "Rubber Soul" (1965), "Revolver" (1966), "Sgt. Pepper's Lonely Hearts Club Band" (1967), "The Beatles/White Album" (1968), "Yellow Submarine" (1969), "Abbey Road" (1969), and "Let It Be" (1970).

♥ 1970s-Present: After the Breakup of the Band

The Beatles disbanded in 1970, leading to people conspiring the cause as Yoko Ono and Lennon's relationship, but their music continues to influence and inspire. John Lennon was assassinated in 1980 causing the world to mourn. George Harrison died of throat cancer in 2001, and the other two members, Paul McCartney and Ringo Starr, continue to write and record music to this day. The Beatles' legacy is celebrated with releases such as "The Beatles: Get Back" documentary series in 2020.



John Lennon and Yoko Ono



The Beatles: Get Back Poster

Influence on English Rock Music: Before and After The Beatles

Before The Beatles, English rock music was heavily influenced by American rock 'n' roll and blues. British bands often emulated American artists like Elvis Presley, Chuck Berry, and Little Richard. However, The



Beatles, with their innovative songwriting, harmonies, and recording techniques, revolutionized the genre. Their distinct British sound, characterized by melodic bass lines, sophisticated vocal arrangements, and inventive studio effects, influenced countless artists.

The Beatles' impact extended beyond music to fashion, culture, and social movements. They popularized the "mop-top" hairstyle and influenced 1960s fashion with their iconic suits and later, their psychedelic clothing. Culturally, The Beatles' music addressed themes of love, peace, and social change, resonating with the countercultural movement of the 1960s. Songs like "All You Need Is Love" and "Revolution" became anthems for peace and change, reflecting the societal shifts of the era. Additionally, their groundbreaking use of the recording studio as an instrument, with albums like "Sgt. Pepper's Lonely Hearts Club Band," set new standards for musical production and experimentation.

Influence on Literature and Drama: Before and After Shakespeare

Before William Shakespeare, English literature was predominantly influenced by religious and historical themes, with works often written in Latin. Shakespeare's works introduced complex characters, innovative plots, and a rich use of the English language, transforming English literature and drama. His plays blended various genres, combining elements of comedy, tragedy, and history, creating multifaceted narratives that appealed to a wide audience.

Shakespeare's influence extended into the development of the English language, coining many words and phrases still in use today, such as "break the ice," "heart of gold," and "wild-geese chase." His mastery of verse and prose allowed him to convey deep human emotions and philosophical ideas, making his characters relatable and timeless. The introduction of soliloquies, where characters reveal their innermost thoughts directly to the audience, added a new dimension to storytelling, offering profound psychological insights.

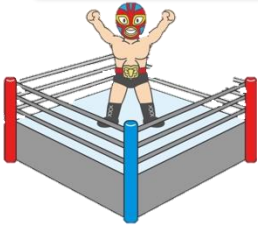
Shakespeare's impact is evident in the works of countless writers, from his contemporaries like Christopher Marlowe to modern authors like James Joyce and Tom Stoppard. His plays continue to be performed worldwide, showcasing their enduring relevance and universal themes. Shakespeare is also celebrated in Ontario through a very prominent art festival known as [The Stratford Festival](#), previously known as the Stratford Shakespeare Festival. The richness of his language, the complexity of his characters, and the depth of his storytelling have cemented Shakespeare's status as a literary icon whose influence transcends centuries.



Glossary

Word	Meaning	Use it in a sentence
Pastoral Comedy	A genre of literature that idealizes rural life and nature, often featuring shepherds and rustic settings. "As You Like It" is a prime example.	The play was a delightful pastoral comedy filled with charming shepherds and playful romance.
First Folio	The first collected edition of Shakespeare's plays, published in 1623, seven years after his death. It is one of the most important publications in English literature.	I finally got to see a First Folio of Shakespeare's plays—what an incredible piece of history!
Fool	A character who provides comic relief and often speaks truth to power. In "As You Like It," Touchstone is the fool.	"Is not this a rare fellow, good my lord? he is as good at anything, and yet a fool." (5.4.108)
Soliloquy	A speech given by a character alone on stage, revealing their inner thoughts. Jacques' "All the world's a stage" speech is a famous example.	Soliloquies differ from monologues in that the words spoken are thoughts only, and no other characters can hear them.
Usurper	Someone who takes power illegitimately. In "As You Like It," Duke Frederick usurps his brother Duke Senior's position.	"Yea, and of this our life; swearing that we Are mere usurpers, tyrants..." (2.1.614)
Wilt	The old English word for 'will'.	"And wilt thou have me?" (4.1.123)
Thou	The old English word for 'you'	"Thou speakest wiser than thou art ware of." (2.4.52)
Yonder	The old English word for 'over there'.	"Yonder comes my master, your brother." (1.1.24)
Albeit	The old English word for 'although' or 'even though'	"I have as much of my father in me as you, albeit; I confess, your coming before me is nearer to his reverence." (1.1.45)
Hath	The old English word for 'has'.	"Hath not old custom made this life more sweet Than that of painted pomp?" (2.1.2)
Forbear	The old English word for 'withdraw'.	"But forbear, I say. He dies that touches any of this fruit..."(2.7.102)

Synopsis



ACT 1 - SCENE I

Wrestling host, Touchstone, introduces the wrestling competition, sponsored by Dame Frances. Charles “Two-Guns” Leibowitz competes in an open-call free-for-all where anyone who defeats the reigning champion would win the cash prize. Charles’s first contender is Mustachio accompanied by his girlfriend Eleanor Rigby – who leaves him for Charles when Mustachio is defeated. Charles exclaims that this

is his ring and money. His second contender is the Assassins, two Swedish brothers accompanied by their mother, Lady Danger. Charles fights the brothers and is the champion once again [**“Money (That’s What I Want)”**]. While cleaning the ring after the fights, Orlando, the youngest son of the recently deceased Sir Rowland de Boys, complains to Adam, the long-time employee of the de Boys’, about the mistreatment he has been facing because of his older brother, Oliver. Bitter and angry over his brother’s refusal to give him the money his father’s will promised him, Orlando challenges the reigning wrestling champion to a fight. When Oliver learns of the fight, he tells Charles not to hold back against Orlando.

SCENE II

Dame Frances has recently banished her sister, Dame Senior, as head of the court. Senior's daughter, Rosalind, is allowed to remain as she and Frances’ daughter, Celia, are close friends [**“We Can Work It Out”**]. The two cousins watched the wrestling competition between Orlando and Charles. During the match, Rosalind and Orlando fall in love [**“She Loves You”**]. After Orlando beats Charles and is denied his winnings, Rosalind gives him a chain to wear; in turn, he is overcome with love [**“I Want to Hold Your Hand”**].

SCENE III & IV

Dame Frances banishes Rosalind, and she decides to seek shelter in Okanagan with Celia. They both disguise themselves: Rosalind as the young man, Ganymede, and Celia as his shepherdess sister, Aliena. Touchstone accompanies them on their journey. Adam warns Orlando of his brother’s plans to have him killed, and the two decide to seek refuge in Okanagan.

SCENE V, VI & VII

When Dame Frances hears that Celia and Rosalind are with Orlando, she orders Oliver to find his brother and bring them all back. As Rosalind, Celia, and Touchstone; and Orlando and Adam venture into the forest on their way to Okanagan [**“Help!”**], we see exiled Dame Senior. In the forest, the cousins stumble upon Silvius, a lovesick shepherd, who was declaring his feelings for Phoebe, a scornful shepherdess [**“I Saw Her Standing There”**]. Ganymede buys the lease to the property of an old shepherd, Corin, who needs someone to manage his estate. Ganymede and Aliena set up home in the forest.

SCENE VIII, IX & X

Unaware of the newcomers, melancholy Jaques is serenaded by Amiens and the band. [**“While My Guitar Gently Weeps,” “While My Guitar Gently Weeps (reprise),”**]. Jaques shares their own song [**“I Am the Walrus”**]. In a different part of the forest, Orlando and Adam continue their journey and seek shelter and food. Dame Senior and those who accompanied her upon her exile set up a table with food

["**The Fool on the Hill**"]. The merriment is interrupted by the arrival of Orlando, who seeks nourishment for himself and Adam, and both are welcomed by the outlaw courtiers ["**Let It Be**"].

SCENE XI & XII

Oliver returns to Dame Frances without any news about Orlando, Rosalind, or Celia, and she orders Oliver to continue to search for his brother and return him to the court, dead or alive. In the Okanogan Forest, Orlando hangs love letters to Rosalind on the trees ["**Do You Want to Know a Secret?**"]. As Touchstone and Corin discuss the shepherd's life, Rosalind and Celia discover the love letters ["**Eight Days a Week**"] and realize that Orlando has written them for Rosalind. Moments later they encounter Orlando, and Rosalind, disguised as Ganymede, proposes to cure Orlando of his love, and tells him to woo Ganymede as if he were Rosalind ["**Eight Days a Week/I Want to Hold Your Hand (Reprise)**"].



ACT 2 - SCENE I, II & III

Touchstone has dazzled a country girl, Audrey, with his courtly manners, and the two get engaged ["**When I'm 64**"]. Rosalind is hurt when Orlando does not meet her (Ganymede) for his lessons ["**You've Got to Hide Your Love Away**"]. Corin comes to tell Ganymede that the shepherdess, Phoebe, has fallen for him while Silvius still pursues her ["**Love Me Do**"]. Ganymede tells Phoebe not to fall in love with him, but Phoebe can't help her feelings ["**Something**"]. Orlando finally arrives for his lesson from Ganymede ["**Can't Buy Me Love**"], and the two have a mock-ceremony in which Orlando marries Ganymede, who is actually Rosalind ["**Got To Get You Into My Life**"].

SCENE IV, V & VI

As Ganymede helps Silvius, Oliver encounters the cousins in their disguises. He recounts the tale of Orlando saving him from a mountain lion in the forest, injuring his arm in the process. Touchstone encounters Audrey's former suitor ["**Helter Skelter**"]. As it is revealed that Celia and Oliver are in love ["**Good Day Sunshine**"] and will wed the next day, Orlando reveals that he cannot pretend Ganymede is Rosalind anymore. Ganymede promises Orlando that he will marry Rosalind tomorrow, promises Phoebe that if he were to marry a woman it would be her, and promises Silvius that he will also get married tomorrow ["**Here Comes the Sun**"].

SCENE VII

Before removing her disguise, Rosalind asks Dame Senior if she will allow Rosalind to marry Orlando. Dame Senior says yes. Orlando is asked if he will marry Rosalind if Ganymede brings her to him, to which he responds yes. Phoebe is asked if she will marry Ganymede, but if she is not willing, then agree to marry Silvius. Phoebe responds yes. Finally, Rosalind asks Silvius if he will marry Phoebe, to which he replies yes. As Rosalind and Celia re-enter, now dressed as themselves, the god Hymen emerges to wed the couples ["**Across the Universe**"]. Orlando and Rosalind, Oliver and Celia, and Silvius and Phoebe marry. Jaques de Boys, the brother of Orlando and Oliver, tells the group that Dame Frances has left the court to live a religious life. What was rightfully Dame Senior's is once again hers. Everyone celebrates the news and the weddings ["**All You Need is Love**"].

The Characters

Orlando – The youngest son of Sir Rowland de Boys, who has languished under his brother’s neglectful care.

Rosalind – The daughter of Dame Senior, who falls in love with Orlando.

Celia – The daughter of Dame Frances, and Rosalind’s dearest friend.

Oliver – The oldest son of Sir Rowland de Boys, and manager of Charles the Wrestler. Hates his brother Orlando and goes to great lengths to ensure his brother’s downfall.

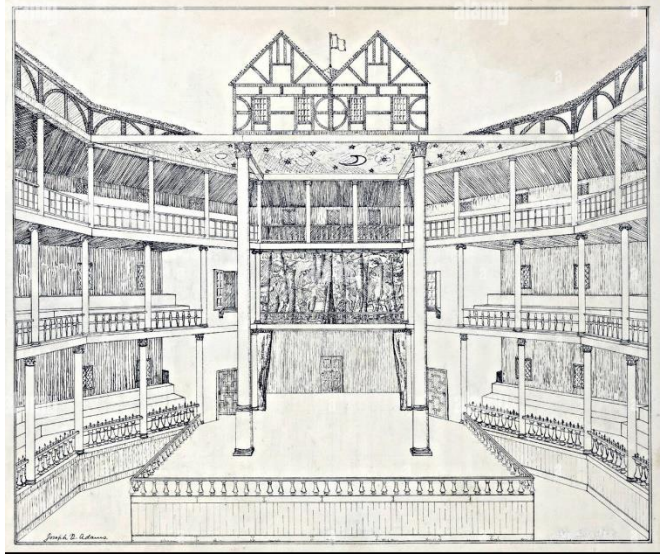
Dame Senior- A philosopher who has been banished to the Okanagan.

Dame Frances – The usurper and new kingpin.

Touchstone – He is Dame Frances’ court jester and accompanies Rosalind and Celia to Okanagan.



The cast of *As You Like It*.
Photo by: Trudie Lee for Theatre Calgary.



Shakespeare's Globe Theatre

Jaques de Boys – The brother of Orlando and Oliver.

Silvius - A young, suffering shepherd, who is desperately in love with the disdainful Phoebe.

Phoebe - A young shepherdess, who disdains the affections of Silvius.

Audrey – A goatherd who falls in love with Touchstone.

Corin – A shepherd who attempts to counsel Silvius in the ways of love.

Jacques – One of Dame Senior’s followers. Melancholy and full of wit. An outsider.

William - A young country boy who is in love with Audrey.

Adam –The elderly, loyal, former servant of Sir Rowland de Boys.

LeBeau – Dame Frances' courtier

Song List

Check out the "As You Like It vibes" Spotify playlist!

Click on the Record or search "As You Like It vibes" on Spotify

- 
- 1. Money, That's What I Want**
ELEANOR & ENSEMBLE
 - 2. We Can Work It Out**
CELIA & ROSALIND
 - 3. She Loves You**
TOUCHSTONE
 - 4. I Want to Hold Your Hand**
ORLANDO & ROSALIND
 - 5. Help!**
ROSALIND, CELIA, TOUCHSTONE,
ORLANDO, & DAME SENIOR
 - 6. I Saw Her Standing There**
SILVIUS
 - 7. While My Guitar Gently Weeps**
AMIENS & LORDS
 - 8. I Am the Walrus**
JAQUES & LORDS
 - 9. The Fool on the Hill**
JAQUES
 - 10. Let it Be**
DAME SENIOR & LORDS
 - 11. Do You Want to Know a Secret?**
ORLANDO
 - 12. Eight Days a Week**
ROSALIND
 - 13. Eight Days a Week/I Want to Hold Your Hand (Reprise)**
ROSALIND & ORLANDO
 - 14. When I'm Sixty-Four**
TOUCHSTONE & AUDREY
 - 15. You've Got to Hide Your Love Away**
ROSALIND & CELIA
 - 16. Love Me Do**
SILVIUS
 - 17. Something**
PHOEBE
 - 18. Can't Buy Me Love**
ORLANDO & ROSALIND
 - 19. Got To Get You Into My Life**
ENSEMBLE
 - 20. Helter Skelter**
TOUCHSTONE
 - 21. Good Day Sunshine**
CELIA & OLIVER
 - 22. Here Comes the Sun**
ENSEMBLE
 - 23. Across the Universe**
HYMEN & ENSEMBLE
 - 24. All You Need is Love**
ENSEMBLE

Pre-Show Discussion Questions



1. Some people prefer to read traditional Shakespeare, others prefer watching adaptations of it. Which do you prefer and why?
2. Shakespeare's plays fall into three categories: Comedies, Tragedies, and Histories. Which category does *As You Like It* fit into and why?
3. Think about the music that you enjoy listening to. Can you identify any ways that The Beatles may have influenced your favourite artist(s)?

Pre-Show Classroom Activities

1. A) Check out the flow chart "Which Shakespeare Play Should I See?" on the following page from artist, Mya Lixian Gosling, at [Good Tickle Brain](#). Individually, follow the flow chart and note the play that is recommended. Compare your results with a partner. Have you heard of this play? Read a synopsis and maybe you'll be inspired to find your new favourite Shakespeare story!

B) In small groups, take the BuzzFeed quiz, "[Which Beatles Album Do You Need To Listen To Right Now?](#)". Share your answers and listen to one song from each album that is recommended!
2. List 3-5 prominent female characters in Shakespeare's works (excluding characters from *As You Like It*) and identify their character traits. What are the commonalities and differences you can find between these characters?

Post-Show Discussion Questions

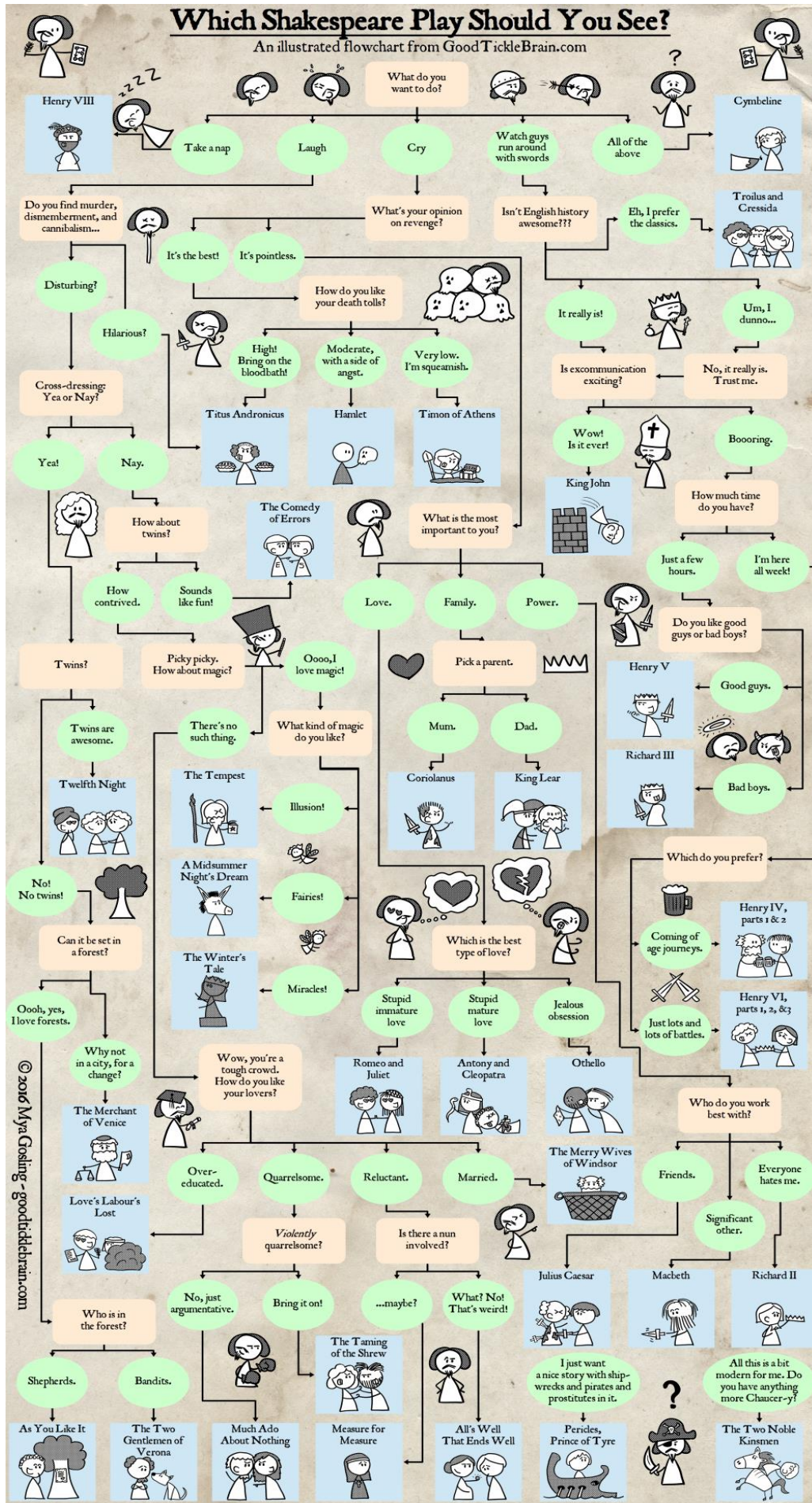
1. Now that you have met Rosalind, does she challenge your opinion about female characters in Shakespeare? How does she compare to the others you identified in pre-show activity #2?
2. Why do you think the creator, Daryl Cloran, chose to include wrestling in this adaptation?
3. Which Beatles song do you think was the best fit to help tell this story? Why?

Post-Show Classroom Activities

1. You have the power to adapt a Shakespeare play and add music to it! Which play and which artist would you choose? Select at least 3 songs by the artist to help tell the story of the play.
2. Refer to the last page of this Audience Enrichment Guide for a print-out activity. Using the list of characters from *As You Like It* and reflecting on the show you saw, draw lines to connect which characters have love for each other. (*Consider that love isn't just romantic!*)

Which Shakespeare Play Should You See?

An illustrated flowchart from GoodTickleBrain.com



© 2016 Myra Gosling - goodticklebrain.com

Post-Show Classroom Activity #2

Reflect on the production of *As You Like It* you saw at the Grand Theatre. Using the list of characters below, draw lines to connect which characters have love for each other.

Use different colours for each different type of love:

- ♥ **Red for romantic**
- ♥ **Blue can be familial**
- ♥ **Green for friendships**



For further reference about the characters, please visit: <https://www.rsc.org.uk/shakespeare-learning-zone/as-you-like-it/character/relationships#>